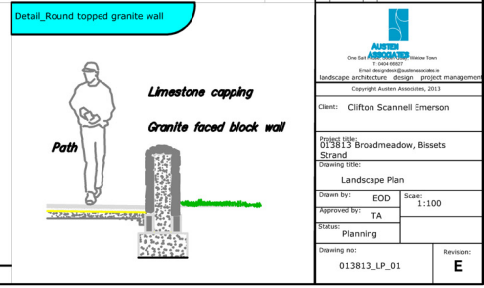
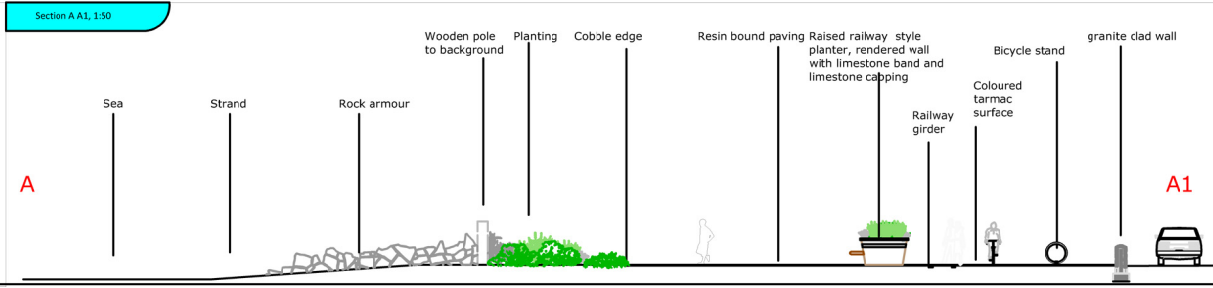
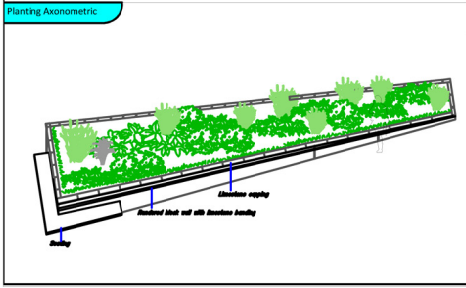


- Ornamental planting with perennials and shrubs using plants such as Nepeta x Fabriciana Blue Gem, Dianthus nummularifolia, Agapanthus orientalis, Artemisia arbuscula and Fraxinus x albanicum
- Native planting using plants such as Arenaria maritima, Conostachyon epictas and Tripurospermum maritimum
- Maritime shrub planting using plants such as Calceolaria arbuscula, Fuchsia, Agave Roseum, Hydrangea macrophylla and Spartium junceum
- Grass lawn
- Wild Grasses
- Coloured tarmac
- Resin bound paving, beige
- Double row of asphalt sets
- Metal rail girder set into paving
- Raised planter with seating, planter is finished with a rendered black wall with limestone banding and limestone capping
- Wooden post of varying heights, min 1.3 to max 1.8m, 300x300mm square
- Bicycle stand, stainless steel brushed finish, 849 (D) x 788mm
- Poured concrete paving with etched signs
- Wall clad in granite rubble with round top, height 1.2m



Broadmeadow Way EIA:
Figure 21

Project No:	13013
Client:	Clifton Scannell Emerson
Project Name:	013813 Broadmeadow, Bissets Strand
Project Location:	Broadmeadow, Bissets Strand
Project Start:	2013
Project End:	2014



Project No:	13013
Client:	Clifton Scannell Emerson
Project Name:	013813 Broadmeadow, Bissets Strand
Project Location:	Broadmeadow, Bissets Strand
Project Start:	2013
Project End:	2014
Project Status:	Planning
Project Manager:	EOD
Project Engineer:	TA
Project Designer:	TA
Project Checker:	TA
Project Approver:	TA
Project Date:	2013
Project Scale:	1:100
Project Drawing No:	013813_LP_01
Project Revision:	E